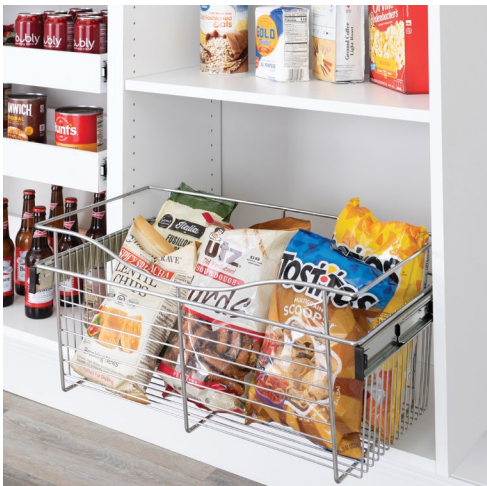


Product Catalog 2021



Make room.
For space.



Start with the basics



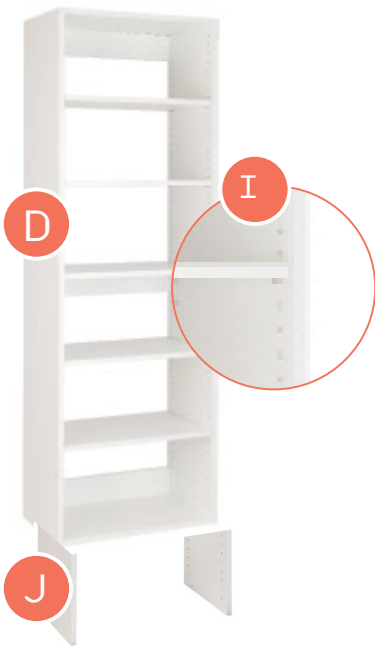
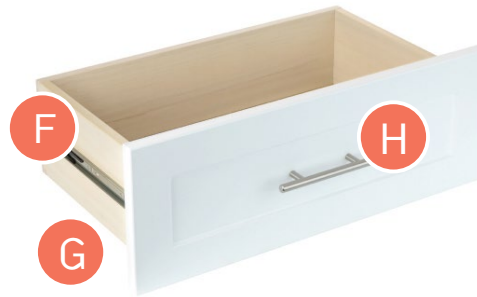
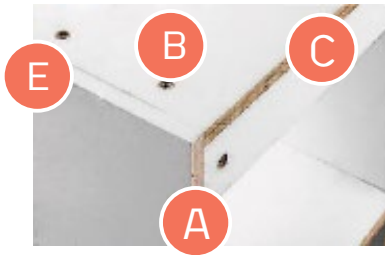
Add shelves, drawers, doors



Choose Accessories

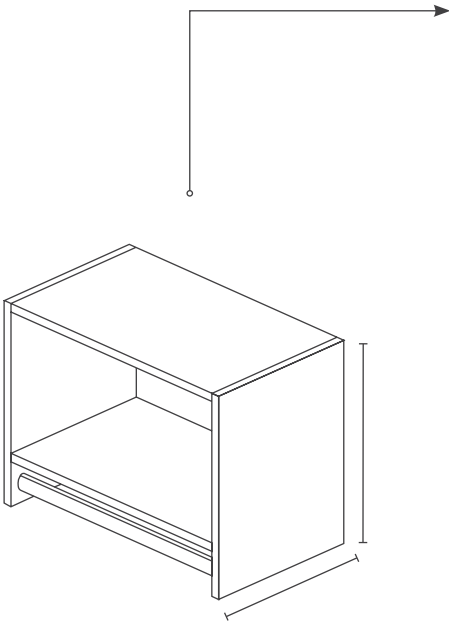


PRODUCT SPECIFICATIONS



- A Limited lifetime warranty
- B Italian cam lock assembly system - with added dowels
- C Patented Cleat System
- D PVC 1mm Edgeband
- E All panels pre-drilled, ready-to-assemble
- F Drawer box - 5/8", natural finished solid wood drawers
- G Drawer slides - Full extension, side mounted 100 lbs
- H Drawer fronts - white thermofoil or melamine, 3/4" thick
- I Stainless steel shelf pins
- J Optional tower floor support
- K Grey textured Antibacterial thermal-fused melamine board

TALL HANGING



White



Grey

SPECIFICATIONS

Color	White / Grey
Finish	Laminate

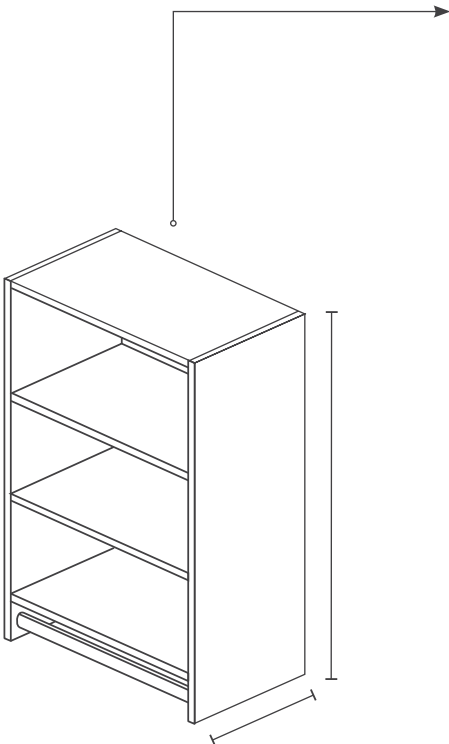
ASSEMBLED DIMENSIONS

Width	18" 19.5" 21" 22.5" 24" 25.5" 27" 28.5" 30" 31.5" 33" 34.5" 36"
Depth	14"

ITEM DETAILS

Mount Type	Wall Mount
Number of Rods	1
Rod Style	Oval, Chrome
Number of Fixed Shelves	2
Shelf Weight Capacity Lbs	50
Rod Weight Capacity	50
Total Weight Capacity Lbs.	150

MEDIUM HANGING



White



Grey

SPECIFICATIONS

Product Type	Medium Hanging
Color	White / Grey
Finish	Laminate

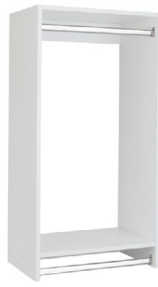
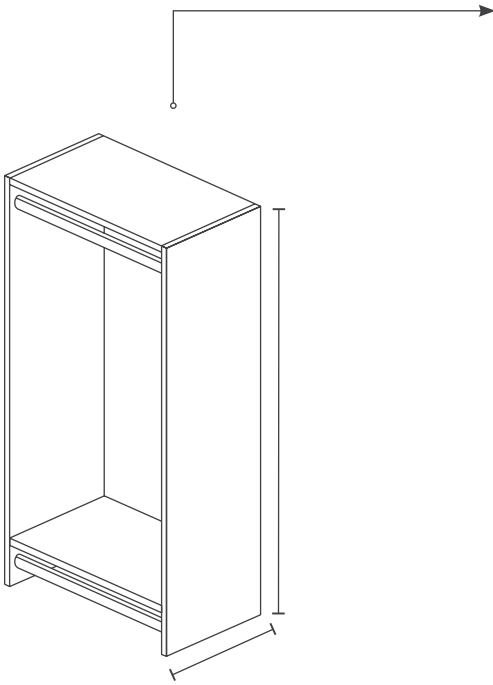
ASSEMBLED DIMENSIONS

Width	19.5" 25.5" 31.5"
Depth	14"

ITEM DETAILS

Mount Type	Wall Mount
Number of Rods	1
Rod Style	Oval, Chrome
Number of Adjustable Shelves	2
Number of Fixed Shelves	2
Shelf Weight Capacity Lbs	50
Rod Weight Capacity	50
Total Weight Capacity Lbs.	250

DOUBLE HANGING



White



Grey

SPECIFICATIONS

Product Type	Double Hanging
Color	White / Grey
Finish	Laminate

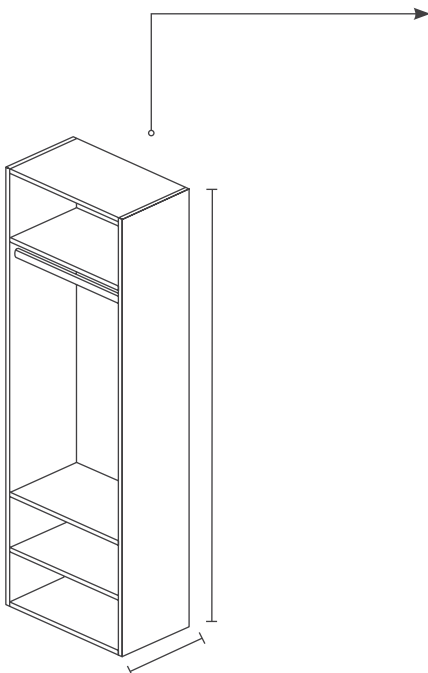
ASSEMBLED DIMENSIONS

Width	18" 19.5" 21" 22.5" 24" 25.5" 27" 28.5" 30" 31.5" 33" 34.5" 36"
Depth	14"

ITEM DETAILS

Mount Type	Wall Mount
Number of Rods	2
Rod Style	Oval, Chrome
Adjustable Shelves	No
Number of Fixed Shelves	2
Shelf Weight Capacity Lbs	50
Rod Weight Capacity	50
Total Weight Capacity Lbs.	200

HANGING TOWER



White



Grey

SPECIFICATIONS

Product Type	Hanging Tower
Color	White / Grey
Finish	Laminate

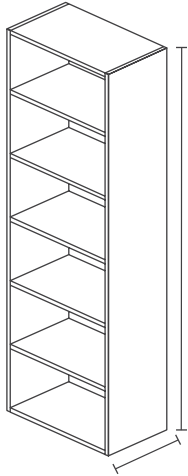
ASSEMBLED DIMENSIONS

Height	71.25"
Width	19.5" 25.5" 31.5"
Depth	14"

ITEM DETAILS

Mount Type	Wall Mount
Number of Rods	1
Rod Style	Oval, Chrome
Number of Adjustable Shelves	1
Number of Fixed Shelves	4
Shelf Weight Capacity Lbs	50
Rod Weight Capacity	50
Total Weight Capacity Lbs.	300

SHELF TOWER



White



Grey

SPECIFICATIONS

Product Type	Shelf Tower
Color	White / Grey
Finish	Laminate

ASSEMBLED DIMENSIONS

Height	71.25" (84" with optional legs)
Width	19.5" 25.5" 31.5"
Depth	14"

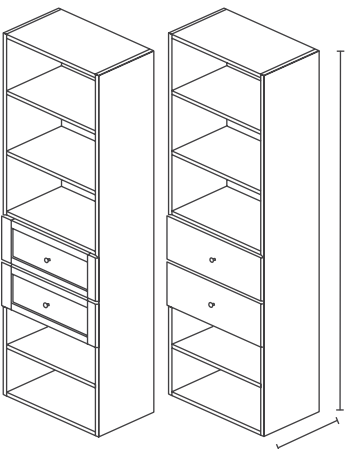
ITEM DETAILS

Mount Type	Wall Mount
Adjustable Shelves	Yes
Number of Adjustable Shelves	4
Number of Fixed Shelves	3
Shelf Weight Capacity Lbs	50
Total Weight Capacity Lbs.	350

2 DRAWER SHELF TOWER

SHAKER

SLAB



White



Grey

SPECIFICATIONS

Product Type	Shelf Tower W/ 2 Drawers
Color	White / Grey
Finish	Laminate

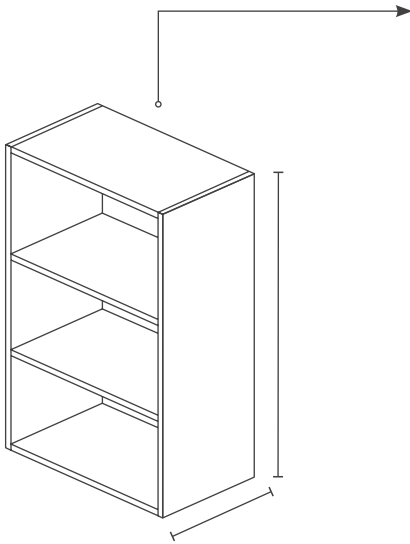
ASSEMBLED DIMENSIONS

Height	71.25" (84" with optional legs)
Width	19.5" 25.5" 31.5"
Depth	14"

ITEM DETAILS

Mount Type	Wall Mount
Number of Adjustable Shelves	4
Number of Fixed Shelves	3
Number of Drawers	2
Shelf Weight Capacity Lbs	50
Total Weight Capacity Lbs.	350

SHORT TOWER (Island)



White



Grey

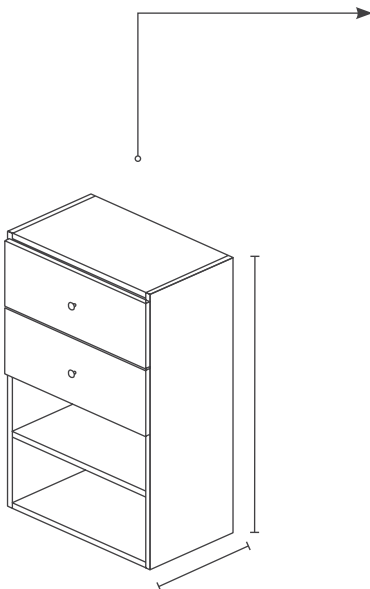
SPECIFICATIONS

Product Type	Short Tower
Color	White / Grey
Finish	Laminate
ASSEMBLED DIMENSIONS	
Height	36" (48" with optional legs)
Width	19.5" 25.5" 31.5"
Depth	14"

ITEM DETAILS

Mount Type	Wall Mount
Number of Adjustable Shelves	2
Number of Fixed Shelves	2
Shelf Weight Capacity Lbs	50
Total Weight Capacity Lbs.	200

2 DRAWER SHORT TOWER (Island)



White



Grey

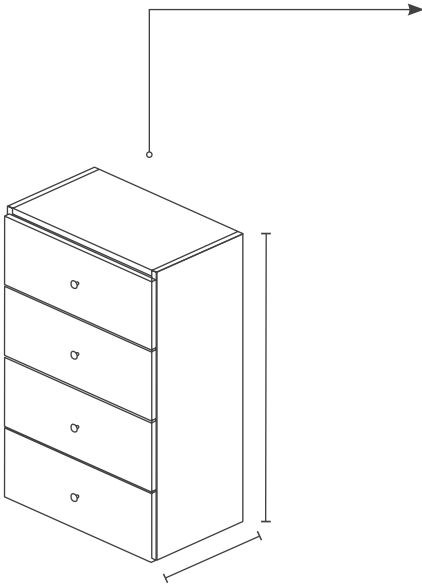
SPECIFICATIONS

Product Type	Short Tower W/ 2 Drawers
Color	White / Grey
Finish	Laminate
ASSEMBLED DIMENSIONS	
Height	36" (48" W/ Optional Legs)
Width	19.5" 25.5" 31.5"
Depth	14"

ITEM DETAILS

Mount Type	Wall Mount
Number of Adjustable Shelves	2
Number of Fixed Shelves	2
Number of Drawers	2
Shelf Weight Capacity Lbs	50
Total Weight Capacity Lbs.	200

4 DRAWER SHORT TOWER

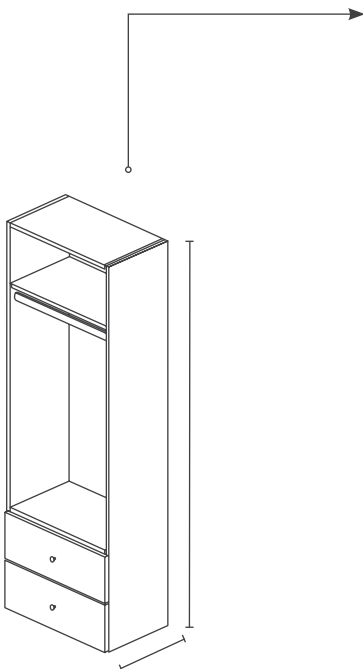


SPECIFICATIONS	
Product Type	Short Tower W/ 4 Drawers
Color	White / Grey
Finish	Laminate
ASSEMBLED DIMENSIONS	
Height	36"
Width	19.5" 25.5" 31.5"
Depth	14"



ITEM DETAILS	
Mount Type	Wall Mount
Number of Fixed Shelves	2
Number of Drawers	4
Shelf Weight Capacity Lbs	50
Total Weight Capacity Lbs.	200

2 DRAWER HANGING TOWER

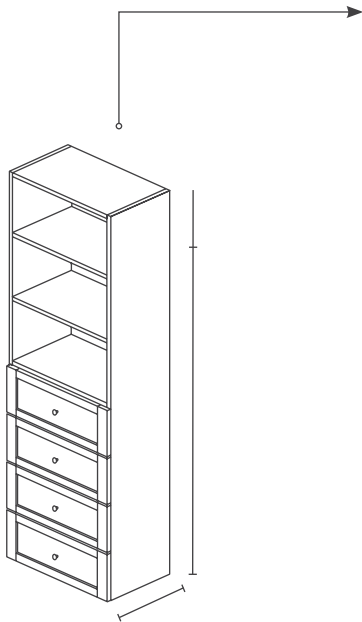


SPECIFICATIONS	
Product Type	Hanging Tower
Color	White / Grey
Finish	Laminate
ASSEMBLED DIMENSIONS	
Height	71.25"
Width	19.5" 25.5" 31.5"
Depth	14"



ITEM DETAILS	
Mount Type	Wall Mount
Number of Rods	1
Rod Style	Oval, Chrome
Number of Fixed Shelves	4
Number of Drawers	2
Shelf Weight Capacity Lbs	50
Rod Weight Capacity	50
Total Weight Capacity Lbs.	300

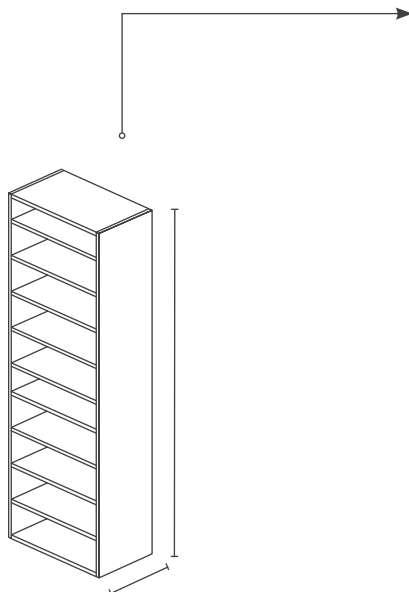
4 DRAWER SHELF TOWER



SPECIFICATIONS	
Product Type	Shelf Tower W/ 4 Drawers
Color	White / Grey
Finish	Laminate
ASSEMBLED DIMENSIONS	
Height	71.25" (84" with optional legs)
Width	19.5" 25.5" 31.5"
Depth	14"

ITEM DETAILS	
Mount Type	Wall Mount
Number of Adjustable Shelves	2
Number of Fixed Shelves	3
Number of Drawers	4
Shelf Weight Capacity Lbs	50
Total Weight Capacity Lbs.	350

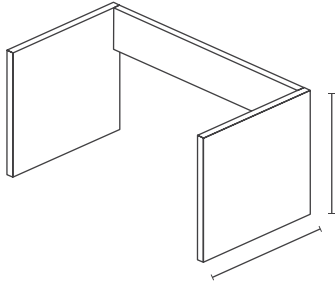
SHOE SHELF TOWER



SPECIFICATIONS	
Product Type	Shoe Tower
Color	White / Grey
Finish	Laminate
ASSEMBLED DIMENSIONS	
Height	71.25" (84" with optional legs)
Width	19.5" 25.5" 31.5"
Depth	14"

ITEM DETAILS	
Mount Type	Wall Mount
Number of Adjustable Shelves	4 or 8
Number of Fixed Shelves	3
Shelf Weight Capacity Lbs	35
Total Weight Capacity Lbs.	385

LEG EXTENSIONS



13" to allow space



SKU	WIDTH
WFB-LE19.5	19.5
WFB-LE25.5	25.5
WFB-LE31.5	31.5

SKU	WIDTH
GFB-LE19.5	19.5
GFB-LE25.5	25.5
GFB-LE31.5	31.5

DOORS FOR TOWER UNITS



SKU	WIDTH
WFB-TWD19.5-SH	For 19.5" UNIT
WFB-TWD25.5-SH	For 25.5" UNIT
WFB-TWD31.5-SH	For 31.5" UNIT
WFB-TWD19.5-SL	For 19.5" UNIT
WFB-TWD25.5-SL	For 25.5" UNIT
WFB-TWD31.5-SL	For 31.5" UNIT

SKU	WIDTH
GFB-TWD19.5-SL	For 19.5" UNIT
GFB-TWD25.5-SL	For 25.5" UNIT
GFB-TWD31.5-SL	For 31.5" UNIT

SET OF 2 DRAWERS



White



Grey

SKU	WIDTH
-----	-------

WFB-DR19.5-SH	19.5
WFB-DR25.5-SH	25.5
WFB-DR31.5-SH	31.5
WFB-DR19.5-SL	19.5
WFB-DR25.5-SL	25.5
WFB-DR31.5-SL	31.5

SKU	WIDTH
-----	-------

GFB-DR19.5-SL	19.5
GFB-DR25.5-SL	25.5
GFB-DR31.5-SL	31.5

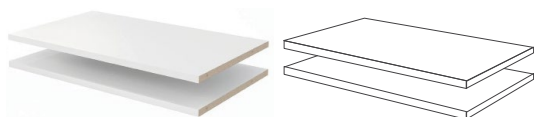
OVAL ROD



SKU	WIDTH
-----	-------

VAC-CR18	For 18" UNIT
VAC-CR19.5	For 19.5" UNIT
VAC-CR21	For 21" UNIT
VAC-CR22.5	For 22.5" UNIT
VAC-CR24	For 24" UNIT
VAC-CR25.5	For 25.5" UNIT
VAC-CR27	For 27" UNIT
VAC-CR28.5	For 28.5" UNIT
VAC-CR30	For 30" UNIT
VAC-CR31.5	For 31.5" UNIT
VAC-CR33	For 33" UNIT
VAC-CR36	For 36" UNIT

SET OF 2 SHELVES



SKU	WIDTH
-----	-------

WFB-AS19.5-2	19.5
WFB-AS25.5-2	25.5
WFB-AS31.5-2	31.5

White

SKU	WIDTH
-----	-------

GFB-AS19.5-2	19.5
GFB-AS25.5-2	25.5
GFB-AS31.5-2	31.5

Grey

CUBBY INSERT



SPECIFICATIONS	
Collection	Sierra
Product Type	Cubby Insert
Plywood	3/4" Melamine
Color	White / Grey
Finish	Laminate
ASSEMBLED DIMENSIONS	
Width	19.5" 25.5" 31.5"
Depth	14"

SHELF PULL OUTS



SPECIFICATIONS		SKU	WIDTH
Sold sets of 2 drawers		CAC-PO19.5	19.5
Slides and hardware included		CAC-PO25.5	25.5
		CAC-PO31.5	31.5

SLANTED SHOE SHELVES



SPECIFICATIONS
Sold in sets of 4 Shelves
hardware included
Width: 19.5" 25.5" 31.5"

WIRE PULLOUT DRAWER



SPECIFICATIONS
heavy-gauge wire with a Chrome finish
hardware included
Width: 19.5" 25.5" 31.5"
Depth: 7" 11" 18"

CLOSET VALET



SPECIFICATIONS

For clothes hangers and hanging garment bags

Polished Chrome

Load bearing capacity (30 lbs.)

Installation Hardware Included

SKU: CAC-808.71.203

BELT RACK



SPECIFICATIONS

Full extension slide

Polished Chrome

Number of hooks (6)

Installation Hardware Included

SKU: CAC-807.67.213

SCARF VALET



SPECIFICATIONS

Full extension slide

Polished Chrome

Number of hooks (18)

Installation Hardware Included

SKU: CAC-807.67.223

TIE RACK



SPECIFICATIONS

Full extension slide

Polished Chrome

Number of hooks (18)

Installation Hardware Included

SKU: CAC-807.67.203

PULL OUT HAMPER DRAWER



SPECIFICATIONS

Material: Aluminum, anodized

Bags: Nylon; Color: black

Frame Finish: Polished chrome

Hamper: 20" Tall

pull-out With full extension slides and removable bags

CORNER BRIDGE SHELF



SPECIFICATIONS

2 pack

2 14" X 14" Shelves

Frame Finish: Polished chrome

8 Mending Plates, and screws

shelves can easily be trimmed to fit the space needed

